

Inox A2

62 233

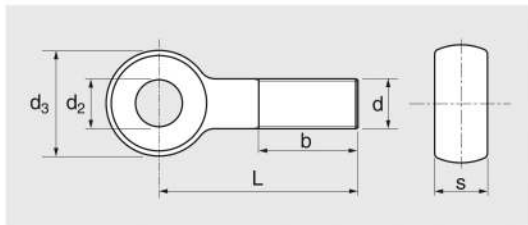
DIN 444 B - (ISO7349, NFE 27-191)

VIS A METAUX A OEIL

EYE BOLT

AUGENSCHRAUBEN

TORNILLOS CON OJO



d	M 6	M 8	M 10	M 12	M 16	M 20
d2	6	8	10	12	16	18
d3	14	18	20	25	32	40
s	7	9	12	14	17	22
Pas	1	1,25	1,5	1,75	2	2,5
b (L<=125)	18	22	26	30	38	46
b (125-200)	-	28	32	36	44	52
b (L>200)	-	-	-	49	57	65

d x L	Code	Cond.	kg/100	d x L	Code	Cond.	kg/100
6X40	622336X40	50	1,370	12X60	6223312X60	25	7,140
6X50	622336X50	50	1,590	12X70	6223312X70	10	8,030
6X60	622336X60	50	1,810	12X80	6223312X80	10	8,920
8X40	622338X40	25	2,500	12X90	6223312X90	10	9,810
8X50	622338X50	25	2,890	12X100	6223312X100	10	10,600
8X60	622338X60	25	3,280	16X60	6223316X60	10	13,500
8X70	622338X70	25	3,680	16X70	6223316X70	10	14,900
8X80	622338X80	25	4,070	16X80	6223316X80	10	16,400
8x100	622338X100	25	4,570	16X90	6223316X90	10	18,000
10X50	6223310X50	25	3,910	16X100	6223316X100	10	19,600
10X60	6223310X60	25	4,530	16X110	6223316X110	5	21,200
10X70	6223310X70	25	5,150	16X120	6223316X120	5	22,800
10X80	6223310X80	25	5,760	20X100	6223320X100	5	33,400
10X90	6223310X90	25	6,380	20X110	6223320X110	5	35,900
10X100	6223310X100	25	7,000	20X150	6223320X150	5	45,700
12X50	6223312X50	25	6,320				