

Acier Zn

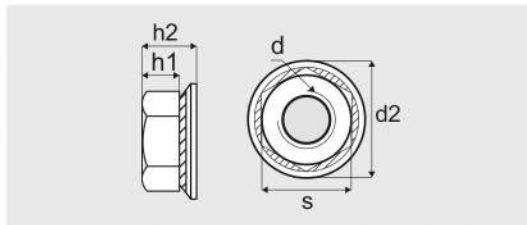
78601

ECROUS TWOLOCK CS

TWOLOCK CS NUTS

TWOLOCK CS MUTTERN

TUERCAS TWOLOCK CS



| d nominal | Code | Pas | d2 | s | h1 | h2 | Cond. | kg/100 |
|-----------|------------|------|-------|----|-------|-------|-------|--------|
| M 4 | 786014CR3 | 0,7 | 10,2 | 7 | 3 | 4,2 | 200 | 0,110 |
| M 5 | 786015CR3 | 0,8 | 12,2 | 8 | 4,4 | 5,55 | 200 | 0,193 |
| M 6 | 786016CR3 | 1 | 14,2 | 10 | 4,9 | 6,9 | 200 | 0,324 |
| M 8 | 786018CR3 | 1,25 | 18,2 | 13 | 6,44 | 8,98 | 200 | 0,698 |
| M 10 | 7860110CR3 | 1,5 | 22,25 | 16 | 8,04 | 11 | 100 | 1,255 |
| M 12 | 7860112CR3 | 1,75 | 27,25 | 18 | 10,37 | 13,75 | 100 | 2,067 |

Inox A1

62629

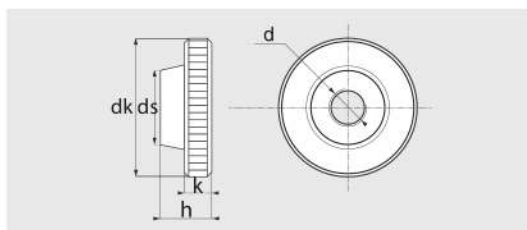
DIN 466 - (UNI 6605)

ECROUS MOLETES TYPE HAUT

KNURLED THUMB NUTS HIGH TYPE

RÄNDELMUTTERN HÖHE FORM

TUERCAS MOLETEADAS FORMA ALTA



| d nominal | Code | Pas | dk | ds | h | k | Cond. | kg/100 |
|-----------|---------|------|----|----|------|-----|-------|--------|
| M 3 | 626293 | 0,5 | 12 | 6 | 7,5 | 2,5 | 50 | 0,300 |
| M 4 | 626294 | 0,7 | 16 | 8 | 9,5 | 3,5 | 50 | 0,719 |
| M 5 | 626295 | 0,8 | 20 | 10 | 11,5 | 4 | 25 | 1,300 |
| M 6 | 626296 | 1 | 24 | 12 | 15 | 5 | 25 | 2,400 |
| M 8 | 626298 | 1,25 | 30 | 16 | 18 | 6 | 25 | 4,600 |
| M 10 | 6262910 | 1,5 | 36 | 20 | 23 | 8 | 10 | 8,800 |