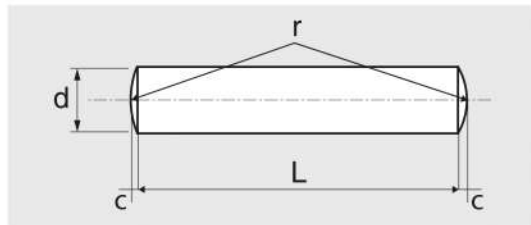


## GOUPILLES CYLINDRIQUES

CYLINDRICAL PINS  
ZYLINDERSTIFTE  
PASADORES CILINDRICOS



d (m6)	1	1,5	2	2,5	3	4	5	6	8	10
c	0,15	0,23	0,3	0,4	0,45	0,6	0,75	0,9	1,2	1,5
r	1	1,6	2	2,5	3	4	5	6	8	10

d x L	Code	Cond.	kg/100	d x L	Code	Cond.	kg/100
1X4	627031X4	200	0,003	3X28	627033X28	100	0,157
1X5	627031X5	200	0,003	3X30	627033X30	100	0,168
1X6	627031X6	200	0,050	3X32	627033X32	100	0,179
1X8	627031X8	200	0,500	3X36	627033X36	100	0,201
1X10	627031X10	200	0,010	3X40	627033X40	100	0,223
1X12	627031X12	200	0,007	4X6	627034X6	100	0,064
1,5X4	627031,5X4	200	0,006	4X8	627034X8	100	0,084
1,5X5	627031,5X5	200	0,100	4X10	627034X10	100	0,104
1,5X6	627031,5X6	200	0,020	4X12	627034X12	100	0,123
1,5X8	627031,5X8	200	0,011	4X14	627034X14	100	0,144
1,5X10	627031,5X10	200	0,014	4X16	627034X16	100	0,163
1,5X12	627031,5X12	200	0,017	4X18	627034X18	100	0,183
1,5X14	627031,5X14	200	0,020	4X20	627034X20	100	0,203
1,5X16	627031,5X16	200	0,022	4X24	627034X24	100	0,243
2X5	627032X5	100	0,013	4X28	627034X28	100	0,282
2X6	627032X6	100	0,017	4X30	627034X30	100	0,300
2X8	627032X8	100	0,020	4X32	627034X32	100	0,321
2X10	627032X10	100	0,025	4X36	627034X36	100	0,360
2X12	627032X12	100	0,030	4X40	627034X40	100	0,400
2X14	627032X14	100	0,035	4X45	627034X45	100	0,440
2X16	627032X16	100	0,040	4X50	627034X50	100	0,480
2X18	627032X18	100	0,045	5X6	627035X6	100	0,130
2X20	627032X20	100	0,051	5X8	627035X8	100	0,133
2X24	627032X24	100	0,061	5X10	627035X10	100	0,164
2X28	627032X28	100	0,060	5X12	627035X12	100	0,195
2X32	627032X32	100	0,070	5X14	627035X14	100	0,226
2,5X4	627032,5X4	100	0,017	5X16	627035X16	100	0,257
2,5X5	627032,5X5	100	0,020	5X18	627035X18	100	0,296
2,5X6	627032,5X6	100	0,024	5X20	627035X20	100	0,319
2,5X8	627032,5X8	100	0,032	5X24	627035X24	100	0,380
2,5X10	627032,5X10	100	0,040	5X28	627035X28	100	0,442
2,5X12	627032,5X12	100	0,047	5X30	627035X30	100	0,472
2,5X14	627032,5X14	100	0,055	5X32	627035X32	100	0,503
2,5X16	627032,5X16	100	0,063	5X36	627035X36	100	0,565
2,5X18	627032,5X18	100	0,071	5X40	627035X40	100	0,627
2,5X20	627032,5X20	100	0,078	5X45	627035X45	100	0,703
2,5X24	627032,5X24	100	0,094	5X50	627035X50	100	0,780
3X5	627033X5	100	0,027	5X60	627035X60	100	0,857
3X6	627033X6	100	0,036	6X8	627036X8	100	0,197
3X8	627033X8	100	0,049	6X10	627036X10	100	0,241
3X10	627033X10	100	0,058	6X12	627036X12	100	0,285
3X12	627033X12	100	0,069	6X14	627036X14	100	0,329
3X14	627033X14	100	0,080	6X16	627036X16	100	0,373
3X16	627033X16	100	0,091	6X18	627036X18	100	0,417
3X18	627033X18	100	0,102	6X20	627036X20	100	0,481
3X20	627033X20	100	0,113	6X24	627036X24	100	0,550
3X24	627033X24	100	0,135	6X28	627036X28	100	0,640

PAGE SUIVANTE

## GOUPILLES CYLINDRIQUES

PAGE PRECEDENTE

d x L	Code	Cond.	kg/100	d x L	Code	Cond.	kg/100
6X30	627036X30	100	0,700	8X50	627038X50	50	2,010
6X32	627036X32	100	0,730	8X55	627038X55	50	2,210
6X36	627036X36	100	0,819	8X60	627038X60	50	2,400
6X40	627036X40	100	0,908	8X70	627038X70	50	2,800
6X45	627036X45	100	1,020	8X80	627038X80	50	3,200
6X50	627036X50	100	1,130	10X12	6270310X12	50	0,824
6X55	627036X55	100	1,240	10X16	6270310X16	50	1,070
6X60	627036X60	100	1,350	10X20	6270310X20	50	1,320
8X10	627038X10	100	0,437	10X24	6270310X24	50	1,560
8X12	627038X12	100	0,532	10X28	6270310X28	50	1,800
8X14	627038X14	100	0,604	10X32	6270310X32	50	2,060
8X16	627038X16	100	0,674	10X36	6270310X36	50	2,310
8X18	627038X18	100	0,773	10X40	6270310X40	50	2,550
8X20	627038X20	100	0,852	10X45	6270310X45	50	2,860
8X24	627038X24	100	0,989	10X50	6270310X50	50	3,170
8X28	627038X28	100	1,150	10X60	6270310X60	50	3,790
8X30	627038X30	100	1,250	10X70	6270310X70	50	4,410
8X32	627038X32	100	1,300	10X80	6270310X80	50	5,030
8X36	627038X36	100	1,460	10X90	6270310X90	50	5,650
8X40	627038X40	50	1,620	10X100	6270310X100	50	6,270
8X45	627038X45	50	1,810				



Classe de précision m6 (tolérance) - forme A